

Clifton High School Photography Course: - COMPOSITION (summary)

Understanding these rules, then experiment with them to create your own style.

Rule of thirds – select or imagine two vertical and two horizontal lines in your viewfinder, the intersections are hot spots for most important part of your subject.



Linear Lines – look carefully at any long straight lines, such as the horizon or sides of buildings to ensure they are lined up with the framing of your picture.



Subject's facing direction – shoot a subject looking into the picture and leave space for them to move in that direction too...



Symmetry – the human eye is very keen on symmetry, but the pattern needs to be very even and clean, for it to work well.

Leading lines – guide the eye through the picture with lines that draw the viewer into the subject.



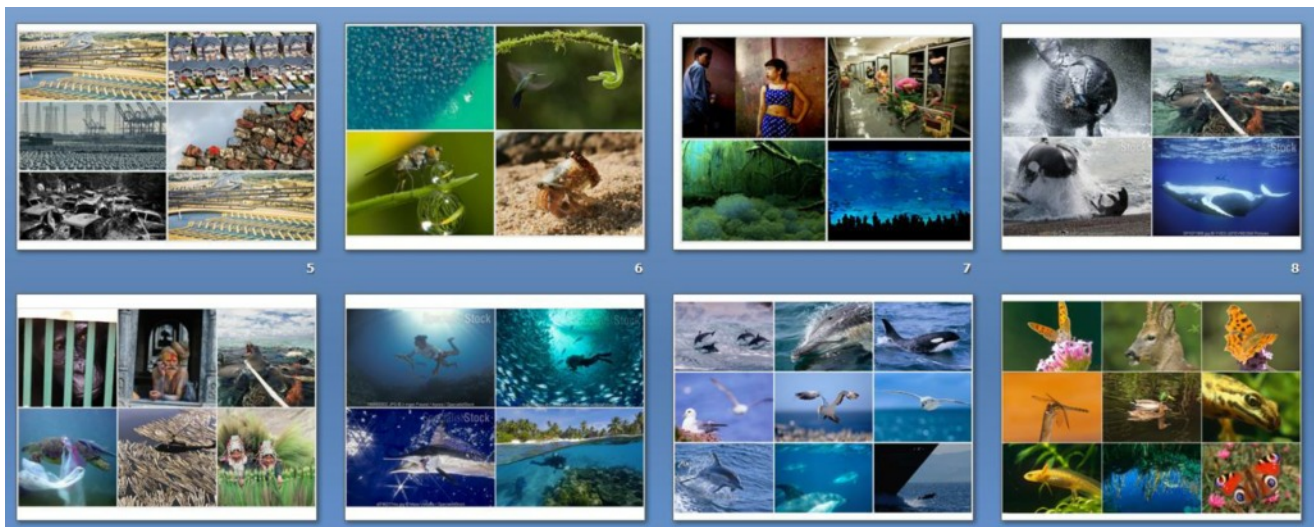
Think deep – something in the foreground, middle and far distance to give scale and perspective.

Know your viewfinder – you only see 95% of the picture in most viewfinders so be careful to exclude distracting objects around the edges of the picture.



Frame within a frame – using objects, such as doorways or trees, which naturally occur around your subject, to frame them within your picture.

Light and dark – contrast in your picture can help the subject stand out. Silhouettes are only interesting to look at briefly, usually better to have the subject well lit.



WILDLIFE PHOTOGRAPHY (composition summary)

Respect your subject, be quiet and patient, avoid flash. Compose your picture carefully...

1. **Keep the horizon straight**
2. **Animal looking into the picture**
3. **Space for animal to move forward within the picture.**
3. **Symmetry and patterns are good**
5. **Lines can help the eye focus on the subject**
4. **Show where it lives in the background**
7. **Light and dark makes a picture more exciting**
8. **Rule of thirds** – divide your view with 2 vertical and 2 horizontal lines. Where the lines meet is a good place for your animal, especially its 'eye'.

