



Mr Dickson
Executive
Headteacher

EXCELLENT START TO THE ACADEMIC YEAR 2018/2019

Can I thank all pupils, staff and parents / carers for an excellent first half-term. It has been a very busy and productive start to the year, and it is hard to believe half-term is rapidly approaching.

I wish you all a very enjoyable and restful half term. School closes at 15:05 on Friday 19th October and resumes again at 10:00 on Monday 29th October.

Read a novel challenge – students have established great reading habits by always having book with them. Half term is an excellent opportunity to read a novel, which will also help with relaxation.

We may be in the middle of some glorious autumn weather, after half term it is forecast to get a lot colder. Can I remind parents and pupils of the importance of wearing shoes with a good grip for safety during icy conditions; and that 'hoodies' are not an acceptable part of school uniform.

DATES FOR YOUR DIARY

Reminder; Half-Term Monday 22nd October – Friday 26th October, 2018

Thursday November 8th at 5pm Eastbury Pupils perform at the Broadway Theatre Barking



Tickets will go on sale for a wonderful show called 'Songs of Empowerment' in celebration of the Women's Movement. The show is produced by our excellent Music department in partnership with South Hampstead High School. For more information, including tickets purchases, please visit ecs-music.com. We look forward to seeing at the event.

Wednesday 28th November Eastbury Pupils perform with the Royal Shakespeare Company at the internationally famous Barbican Theatre, London in Romeo and Juliet.

Special Tickets for a Gala performance will go on sale after half term – the £25 tickets will include coach travel to the theatre, snacks and a soft drink. Please let Ms Ark know if you like to reserve one of these special tickets.

PARTNERSHIP FOR SUCCESSFUL LEARNING

Can I thank parents and carers, again, for ensuring their child gets to school on time every day smartly dressed in full school uniform. Uniform and punctuality are now outstanding. Can I stress to parents and carers the importance of ensuring their child has a good night's sleep and starts the day with a good breakfast. Nobody can learn effectively if they are tired and hungry. We have an excellent Breakfast club in the school, open from 08:00 to 08:30. We are now offering many breakfast items for free made possible by very kind donations to the school.

Secondly I would like to thank parents and carers for attending our parents' evenings and

UPCOMING EVENTS

11 Oct 2018	Y7 Settling Evening
22-26 Oct 2018	Half Term
8 Nov 2018	Y11 Parents' evening
6 Dec 2018	Y10 Parents' Evening

Thought of the Week

"Education is the passport to the future, for tomorrow belongs to those who prepare for it today."

Malcolm X



@ eastburyschool

Eastbury Community School, Hulse Avenue, Barking, Essex IG11 9UW

Tel: 020 8507 4500 / Fax: 020 8507 4501

E-mail: office@eastbury.bardaglea.org.uk / www.eastbury.bardaglea.org.uk

Attendance Office: KS3: 020 8507 4529 / KS4: 020 8507 4527

Pathways events – these are now extremely well attended.

I am often asked by parents how can I help my child to be even more successful. Here is a summary and I will be happy to discuss these with you at our parents' evenings (see the dates for your diary at the end).

- Start by sharing our extremely high expectations and praise your child when you see them making an effort with their studies;
- When your child comes home from school ask them what they have learnt. Discuss and praise good progress in learning;
- Encourage your child to get into a good learning routine for completing homework. Put a high value on this routine and support your child to adhere to it. Remember you can check what homework that is being set by using our online facility – Showmyhomework (If you have any difficulties with this Mr Jhita is very happy to help).
- Remember we set challenging work and we know at times this will be difficult. Encourage your child to persevere and keep trying. Only provide help or encourage your child to ask for help after they have put in a lot of effort to complete the work for themselves;
- Remind your child at 'we all learn from our mistakes';
- Look through your child's work and encourage a pride in its presentation;
- Discuss the news with your child and encourage an interest in current affairs;

- Have a completely technology free 30 minute slot each day when you encourage your child to read for pleasure (Yes, switch off the TV, mobile phones and computer);
- Encourage your child to take part in and practice sport, music or dance;
- Engage in cultural activities with your child such as visiting libraries, museums, art galleries, theatres and historic sites;
- Encourage your child to develop hobbies, to ask questions and to try out new things

AND

- Asking your child to help you with household tasks and shopping! This will help them learn important skills for adult life, and it will also help in their studies.

Thank you for supporting us in helping your child to learn and be successful

SUBJECT PARENTS' EVENINGS

Year 7	7 March
Year 8	4 April
Year 9	31 January
Year 10	6 December
Year 11	8 November
Year 12	21 March
Year 13	7 February



GOLD FOR MYRA AND NATIONAL SELECTIONS

Over the weekend of 22 September 2018, Myra won her 4th National title in Leicester, winning the British International National title on the way beating 2 competitors from Portugal's.

national team giving her a incredible 4th national title this year.

Also 2 weeks ago in Barnsley Myra got selected onto the new England Elite Karate 'A' team.

Myra would like this announced in assembly and put in the newsletter as she so proud to win 4 National titles.

EASTBURY CULTURAL CORNER



EASTBURY ART WORK WINDS ITS WAY AROUND THE COUNTRY

Pupils from Eastbury are having their work shown around the country as part of the international Rivers of the World Project. The project, which is delivered in partnership with Totally Thames and the British Council, works with artists and school pupils from all over the world to celebrate as an aspect of where they live. This year, we worked in parallel with pupils and artists from Palestine and produced work on the birdlife of the Thames wetlands. The stunning sculptures formed part of the exhibition which is travelling the country visiting the other cities involved in the project.

It was great to see Eastbury pupils and staff, along with the other Barking schools involved, recognised for the excellent work produced on the opening night of the Barking leg of the tour. The Barking Boathouse was a wonderful venue and really captured the feeling of celebration on a bright and warm evening which flowed with praise for the work of teachers and pupils alike. David Dickson, Executive Headteacher of Eastbury Community School said: 'Just as rivers connect us physically these kinds of wonderful projects connect us culturally. It is a great feeling to see our pupils learn and share that process in our increasingly globalised world'.

EAL DEPARTMENT: URDU LANGUAGE CLASSES WEDNESDAYS AND THURSDAYS IN L208

Eastbury Community School has successfully been running Urdu classes for two years now. We aim to help students develop their mother tongue Urdu and help them to prepare for a GCSE in Urdu with regular attendance at the classes.

Students from year 7 to 11 can benefit from the club. These classes run on both Wednesday and Thursday in room L208 from 3:15-4:45pm.

Any students who would like to join the Urdu club can get more information from Mr Smith, Head of EAL who is based in L204. His email is ssm@eastbury.bardaglea.org.uk

In the UK, Urdu is the third most spoken language after English. Urdu is also a part of EBacc and many higher education institutions regard the fact that a student has a language qualification highly.



TABLE TENNIS NEWS



GREENHOUSE/EASTBURY PLAYERS PROFILE

MALIHA BAIG

Age:	11
Started Playing at:	Age 7
Title:	Essex 1 Under 13s & Under 15s
Trains:	15-20 hours a week
Clubs:	Morpeth TT, Havering TT and Mossford TT
Long-term aims:	To play in the Olympics
Short-term aims:	England 1 in all age categories
Type of play:	Attacking both sides
Biggest Achievement so far:	Playing for England at six nations

Mahila won Essex trails at Harlow on 23rd September 2018 in all age categories under 13s, 15s and 18s to secure her place for the county.

AWARDS EVENING 2018

More pictures available on the school's website



GILWELL PARK

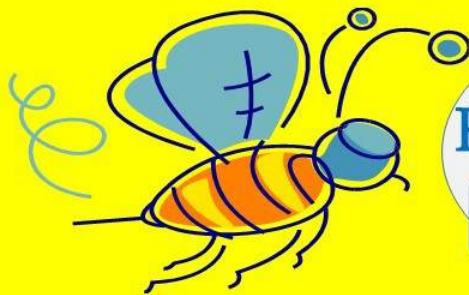


The year 7 Character Education trip at Gilwell Park is now open for booking! All Year 7 students received a letter today inviting them to join our friends at Flooglebinder for another amazing adventure in the Summer of 2019. This is the second time the trip has run and builds on the outstanding character education values that permeate Eastbury school life. The trip is an amazing opportunity for Year 7 to get back to nature by camping

outside, trying locally sourced food, learning about the natural environment and conservation as well as mindfulness, building resilience and embarking on some Outdoor and Adventurous activities. We look forward to this trip again!

<https://vimeo.com/278036160>

Password is Flooglebinder



French Spelling Bee!

Every Friday 3:05pm in
RS08



Do you have a good memory and the confidence to enter a French spelling competition? You will improve your French and win lots of prizes 😊 If you are a Year 8 / 9 pupil and are willing to lead some sessions, also see Mrs Wainer in RS8 after school this Friday!

Students in MFL this week had the chance to celebrate the **European Day of Languages 2018**.

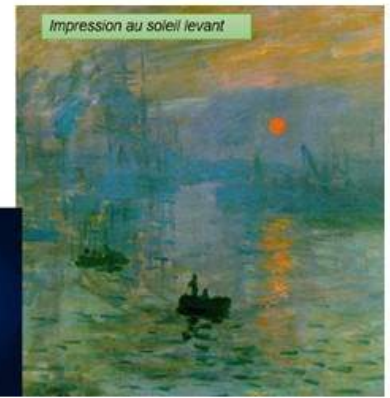
Teachers swapped classes and taught different school subjects in French.

Students enjoyed lessons in art with Mrs Wainer, maths with Miss Lostau, biology with Mr Andrews, food tech with Mrs Rattan and PE with Miss Manning.

A big thank you to all students for your contributions to these special lessons!

Look at this painting from Monet...

What do you notice?



A FEAST OF FOODS

Can you guess which European countries these English food words originate from?

Broccoli	La France
Pizza	La Grèce
Baguette	L'Italie
Chocolat	La Russie
Cherries	La Hollande
Pasta	Le Portugal
Cheese	L'Espagne
Marmalade	La Turquie
Potatoes	L'Allemagne
Pancakes	
Pavlova	
Carrot	
Caramel	
Pretzel	
Yoghurt	
Hamburger	

Les calculs mentaux

Fais le calcul des sommes suivantes:

Deux fois trois font six quatorze plus six font vingt
 trente divisé par cinq font six Treize fois quatre font cinquante-deux
 Douze divisé par quatre font trois Dix-neuf moins un font dix-huit
 Vingt-sept moins cinq font vingt-deux
 Quinze plus quatre font... Dix-neuf

plus +
moins -
fois x
Divisé par =
font =

Vrai ou faux ?

- Le renard mange le lapin ✓
- La grenouille est mangée par le lapin ✓
- Les lombrics mangent les céréales ✓
- Le mulot mange les glands ✓
- L'écureuil est mangé par la chouette ✓
- La chouette mange le renard ✓

Challenge : can you find...

- Un herbivore
- Un omnivore
- Un prédateur

Une touche



Well done to all students that took part in a language taster class as part of the **European Day of Languages 2018**.

Language taster sessions on offer included Greek, Romanian, Italian, Portuguese, Japanese and Spanish

A big thank you to all staff and students involved and we're looking forward to learning some new languages next year!

Miss Manning and the MFL team





SCHOOL COUNCIL

Congratulations to all the students that have been elected as school council reps. Eastbury Community School has a large school council of over one hundred students. Every academic year each tutor group elects two students to represent the views of their peers at school council meetings.

This week school council representatives will be awarded their school council ties by Mr Dickson and they will be electing the students who will chair meetings and take minutes.

School council meetings take place every week before school. Agendas are set by students and staff and provide an opportunity for students to make a real difference in school. Last year school council influenced decisions about the school canteen, recycling and other issues. This year we're looking forward to exploring new ideas and working closely with the Primary Schools council.

Follow what school council are discussing on the school's website under '**Life at Eastbury**'