



Kenningtons Primary Academy



Spring Term Newsletter 8th January 2016

www.kenningtonsprimaryacademy.co.uk



Dates to Remember

Monday 11th January - After-School Clubs Begin

Wednesday 13th January - Year 3 Twilight Trails

Thursday 14th January - Class Champions visit Civic Offices

Thursday 14th January & Friday 15th January - Spanish Dance Workshops

Wednesday 20th January - School Democracy Day

Thursday 28th January - Year 2 Interhouse

Parent Drop In Sessions

Teachers will hold their next Parent Drop In sessions from 3:15pm-4:00pm on the days specified below:

Reception (Kangaroo/Kookaburra) - Tuesday 12th January

1B - Monday 11th January

2G - Thursday 14th January

3H - Friday 15th January

4BW - Tuesday 12th January

5BM - Monday 11th January

Year 6 (6K/6W) - Tuesday 12th January

Please check the newsletter next Friday for details of Parent Drop In sessions for the week beginning 18th January.



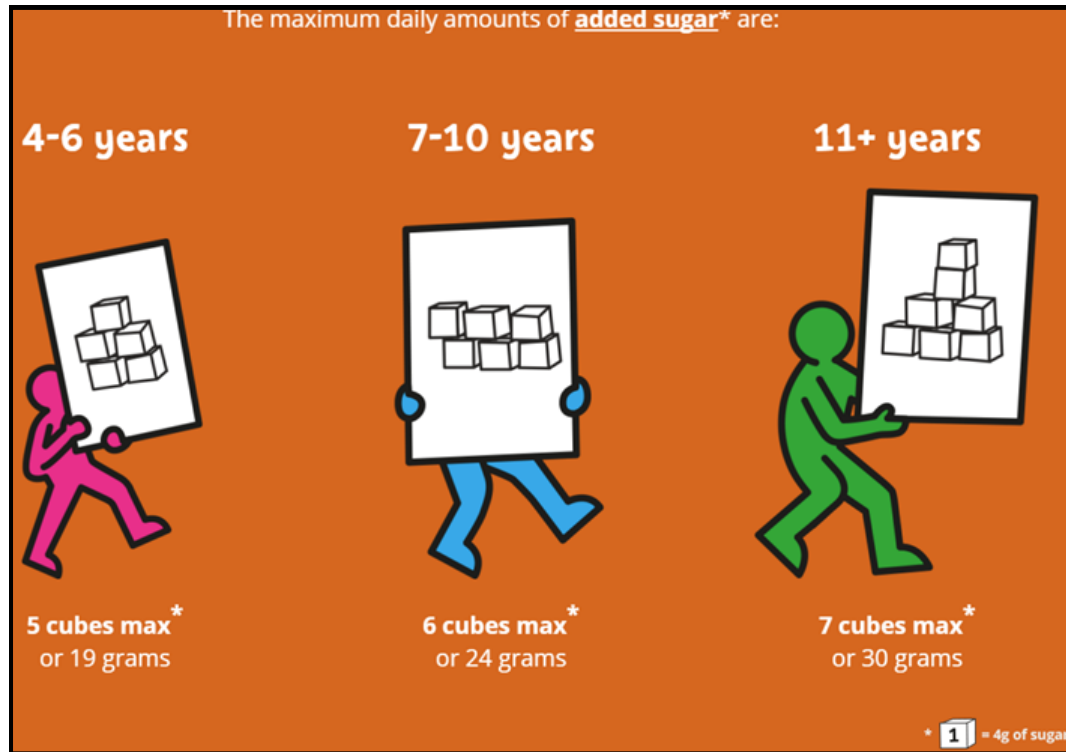
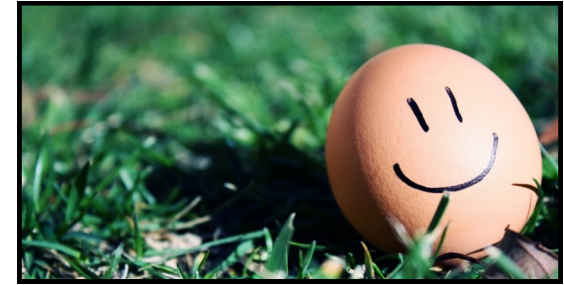
Helping children to get better and better at everything they do



The Health Spot: Sugar Smart App

Change 4 Life have launched the Sugar Smart App which allows parents to scan barcodes with their phones to tell them how much sugar is in food and drinks.

The app can be downloaded from the App Store or Google Play via the Change 4 Life page at: <https://www.nhs.uk/change4life-beta/campaigns/sugar-smart/home#uwL719oJstj5etDY.97>



Good Eggs

This week our focus was
'I can choose when and where to direct my attention, concentrate and resist distractions for increasing periods of time'

Well done to...

Ryan 1B
Daisy 1G
Alicia 2BW
Deana 2G
Keira 3C
Ben 3H
Charlie 3H
Bailey 4BW
Emilia 4K
Sabrina 4N
Amber 5BM
Kwame 5M
Lewis 6K
India 6W
Sophie 6W

William Edwards After-School Clubs 4-11 Years

William Edwards School will be hosting a series of after-school clubs including trampolining and karate from 11th January onwards.

Please contact **01375 486000** or check williamedwards.schoolbookings.co.uk for details.

Accessing the School Site

Did you know there are four pedestrian entrances to the school site? These gates are unlocked by our Caretaker for morning drop-off and afternoon collection to enable parents and pupils to enter the playgrounds. As you can see there are surrounding roads to park in but please ensure you do not obstruct residents and other parents.



Leaving the School Site

Please exit the site promptly after morning drop-off or afternoon collection. It is important that our Caretaker can lock the gates in a timely manner and it can cause problems if groups take up a whole path when there are other parents trying to move across the site.