

Last Week's Attendance		Target	
		100%	
RNK	96.7	100%	4
RNW	97.0	100%	3
1RT	97.2	100%	2
1SM	99.0	100%	1



MILLBROOK PARK
CHURCH OF ENGLAND PRIMARY SCHOOL

Newsletter

Monday 4th July 2016

Dear Families,

This week is all about celebrating the progress the children have made this year and also helping our children and parents to get ready for the changes in September. Thursday will be a special day when children come into school through different doors and spend the day getting to know their new teaching team and new classroom and on Friday the children's end of year written reports will be sent home. We are extremely pleased with the school results this year. Reception ended the year with 75% of children achieving Good Levels of Development, which is 7% higher than last year and in year 1 we are very happy to share that 84.5% of children passed the phonics screener. Both of these results are higher than the current average data for Barnet or National children. I would like to thank our families for the support and encouragement they have given their children over the year and I would also like to thank the teaching team for the incredible work they have done to achieve these results. We look forward to seeing you all at the school's first fete organised by the hardworking PiPs committee.

Yours, Nicola Dudley - Head of School

July

Tuesday 5 th July	Reception class trip to London Zoo
Thursday 7 th July	Transition day
Friday 8 th July	School reports
Sunday July 10 th	Millbrook Park Summer Fete between 1-4pm
Monday 11 th July	SOLD sessions – 3.10pm
Monday 11 th July	Silent Film Festival – 1.45pm for reception parents
Tuesday 12 th July	10:45am (morning children)
Tuesday 12 th July	3.00pm (afternoon children)
Wednesday 20 th July	Outdoor theatre event
Thursday 21 st July	Last day of term finish at 3.10pm

Transition Day

This Thursday the children will enter school in the morning at the door they will be using from September: current reception children will use the blue stairs where year 1 usually go in and current year 1 children will use the orange stairs where the year 2 sign is. They will come out of the same doors at the end of the day. Staff will be around to guide children and parents to the right places.

Also on Thursday:

- current reception children will spend a day in their new classrooms. As Miss Miller has been called for jury service and is likely to be on a case this Thursday, she came into school last Friday and spent the afternoon with her new class, which she thoroughly enjoyed. The plan is for Miss Miller's class to be in their new classroom this Thursday

with Miss Simmons who will be their teaching assistant from September and a lovely teacher who has been covering Miss Miller's class.

- current year 1 children will spend Thursday in their new year 2 classrooms, with Miss Gregoriou or Miss Philippou their new Year 2 teachers. The teachers will be supported by Mrs Moisi the new Year 2 teaching assistant.

End of Year Reports

Each child will bring home their end of year written report this Friday (8th) in an A4 envelope, in their school bag. Also in that envelope will be: attendance reports and phonics screener results (y1 only).

Share Our Learning Day (SOLD)

Parents of reception and year 1 children are invited to a 'SOLD' session and clarification of reports Monday 11th 3:10pm in children's classrooms. It will be a lovely opportunity to look at the progress the children have made across the year and to have a look at your child's new classroom. Teachers will also be happy to explain anything you are unsure of eg 'next steps' in the reports.

Nursery **SOLD** 8.30pm – 9.00pm and 3.00pm to 3.30pm

Reception - Zoo Trip Tuesday 5th July

We will travel to London Zoo by coach from school, leaving at approximately 9.00am and returning for 3.05pm.

All children are entitled to a free school packed lunch, please provide a named plastic bag for them to carry their lunch in. If you have chosen to supply your child with their own packed lunch please provide a healthy lunch in a named carrier bag (no nuts, sweets, fizzy drinks, lunchboxes or flasks please). This is to enable the children to throw away their rubbish so that they do not need to carry a bag all day.

School uniform must be worn. School high visibility vests will be provided by the school on the day. Please ensure your child has an appropriate coat, winter hat / sun hat for the trip and apply sun screen before school if necessary.

Nursery Sports Day

Tuesday 12th July at 10:45am (morning children)

Tuesday 12th July at 3.00pm (afternoon children)

Parents are invited to come and join us for our Sports Day and for refreshments in the garden after.

PIPs

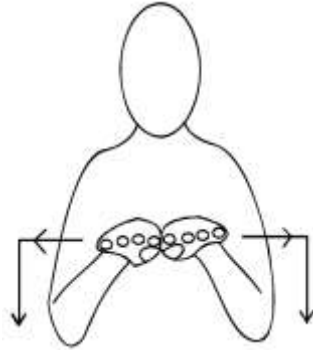
If parents haven't donated chocolate, there is still time to do so and we would really appreciate any extras.

We still need cakes and food items, if you can bake a cake or donate a food item please let Shoba Windsor know as soon as possible.

Can you help to set up the fete, if so please come to the School from 10am onwards on Sunday 10 July.

The Management Company have obtained a waiver on the parking restrictions for 9am – 6pm on Sunday 10th July. This applies to School House Lane only.

Makaton sign of the Week
'table'



Term Dates 2015 -2016

Summer Term 2016 (63 days)

First Half	Monday 18 th April – Friday 27 th May	29 days
<i>Half Term</i>	<i>Monday 30th May – Friday 3rd June</i>	
Second Half	Tuesday 7 th June – Thursday 21 st July	33 days
Inset Day	Monday 6th June	1 day

NB **May bank holiday Monday 2nd May**
Spring bank holiday Monday 30th May

Term Dates 2016 -2017

Autumn Term 2016 (75 days)

First Half	Thursday 1 st September – Friday 21 st October	37 days
<i>Half Term</i>	<i>Monday 24th October – Friday 28th October</i>	
Second Half	Monday 31 st October – Wednesday 21 st December	38 days
<i>Inset Days</i>	<i>Thursday 1st September & Friday 2nd September</i>	<i>2 days</i>

Spring Term 2017 (57 days)

First Half	Thursday 5 th January – Friday 10 th February	27 days
<i>Half Term</i>	<i>Monday 13th February – Friday 17th February</i>	
Second Half	Monday 20 th February – Friday 31 st March	30 days
<i>Inset Day</i>	<i>Monday 20th February</i>	<i>1 days</i>

Summer Term 2017 (63 days)

First Half	Tuesday 18 th April – Friday 26 th May	28 days
<i>Half Term</i>	<i>Monday 29th May – Friday 2nd June</i>	
Second Half	Monday 5 th June – Friday 21 st July	35 days
<i>Inset Days</i>	<i>Tuesday 18th April & Monday 5th June</i>	<i>2 days</i>

NB **May bank holiday Monday 1st May**
Spring bank holiday Monday 29th May

Inset Days are staff training days and children should not attend school.