

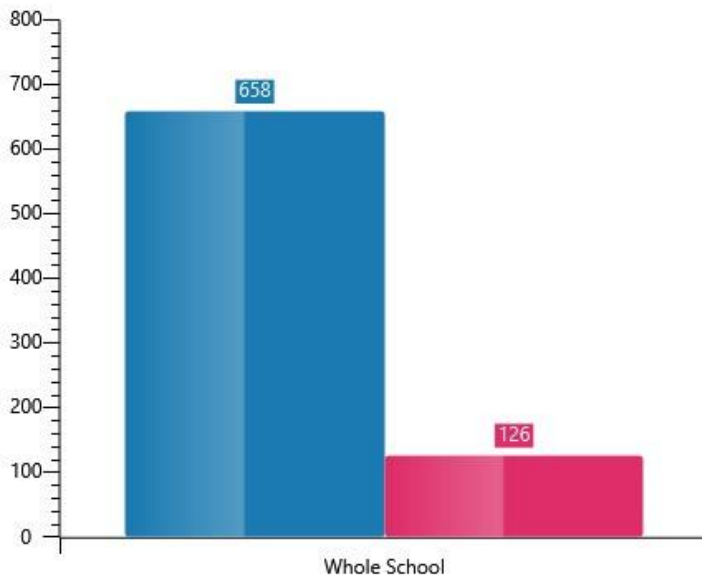
Information about the pupil population

Number of pupils on roll: 658 (correct 4.10.16)

Special Educational Needs

Student Total by Whole School

A count of all students

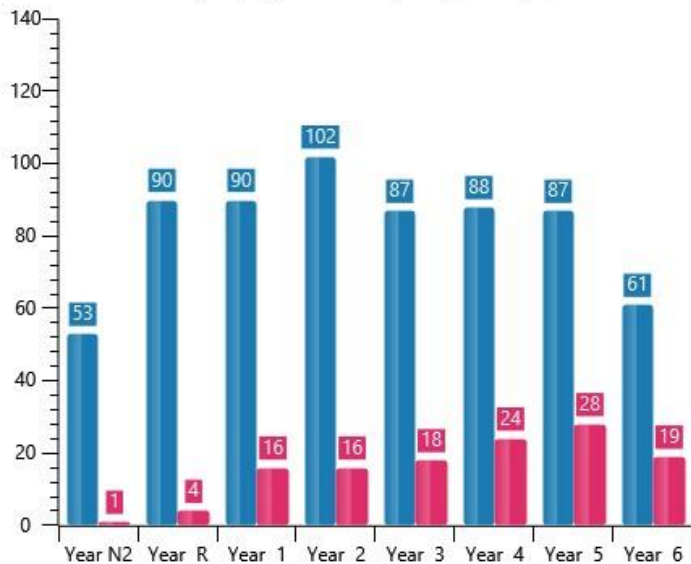


Whole School

Children with SEN: 126 (19%)

Student Totals by Year Group

A count of students in each year group, with drill through to registration group



SEN by year group

Children with SEN: 126 (19%)

Nursery: 1.9% of year group

Reception: 4.5% of year group

Year 1: 17.8% of year group

Year 2: 15.7% of year group

Year 3: 20.7% of year group

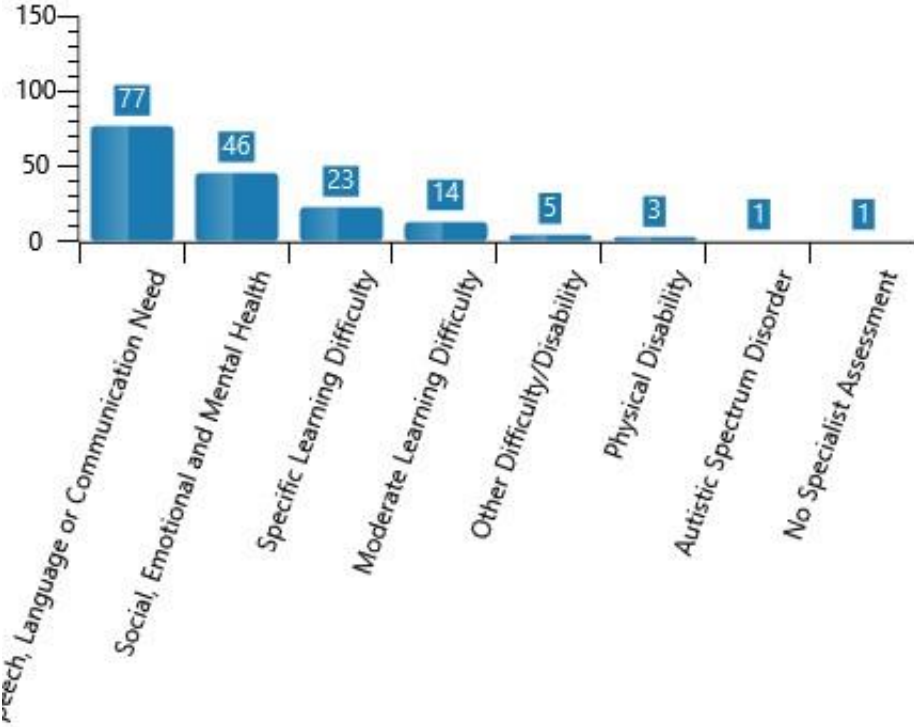
Year 4: 27.3% of year group

Year 5: 32.2% of year group

Year 6: 31.1% of year group

Students by SEN Need Type Category

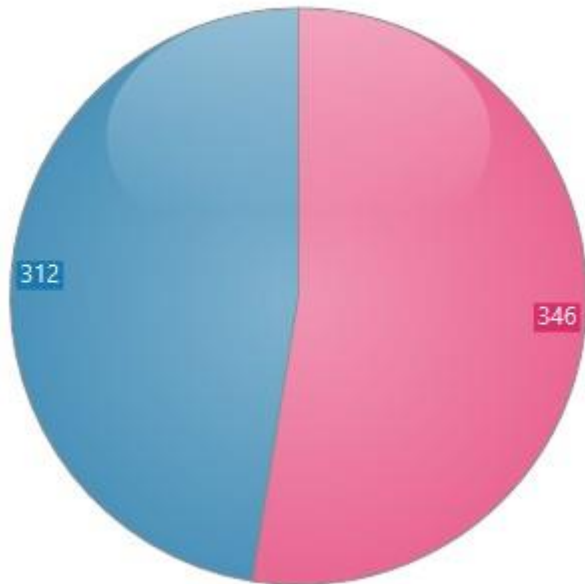
A count of students by their SEN need type category



Gender

Student Total by Gender

A count of students by gender



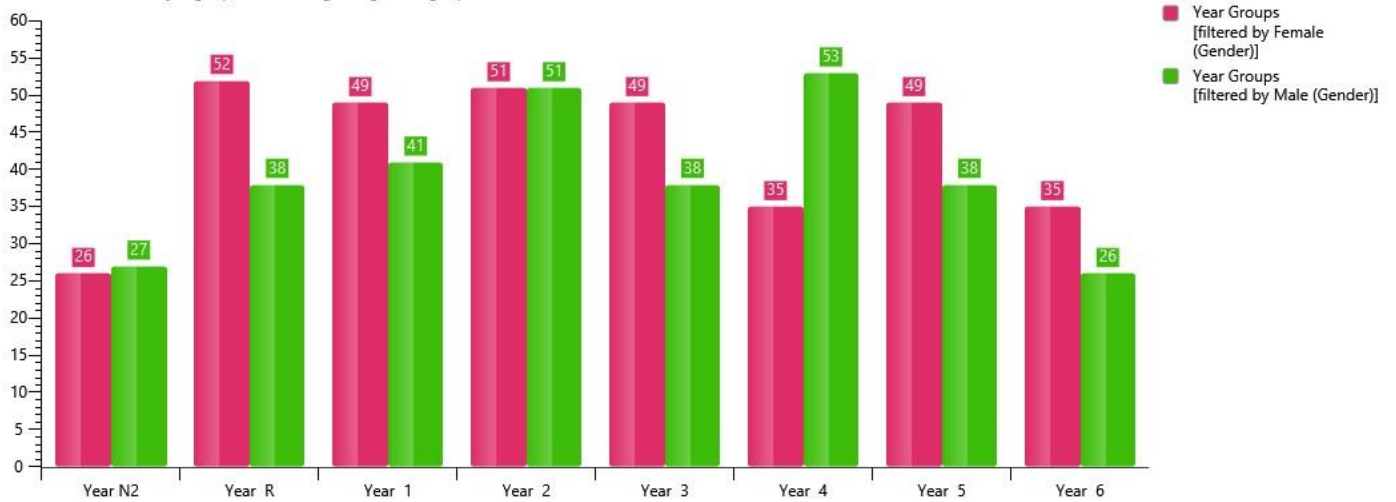
Whole school: 658

Male: 312 (47%)

Female: 346 (53%)

Student Totals by Year Group

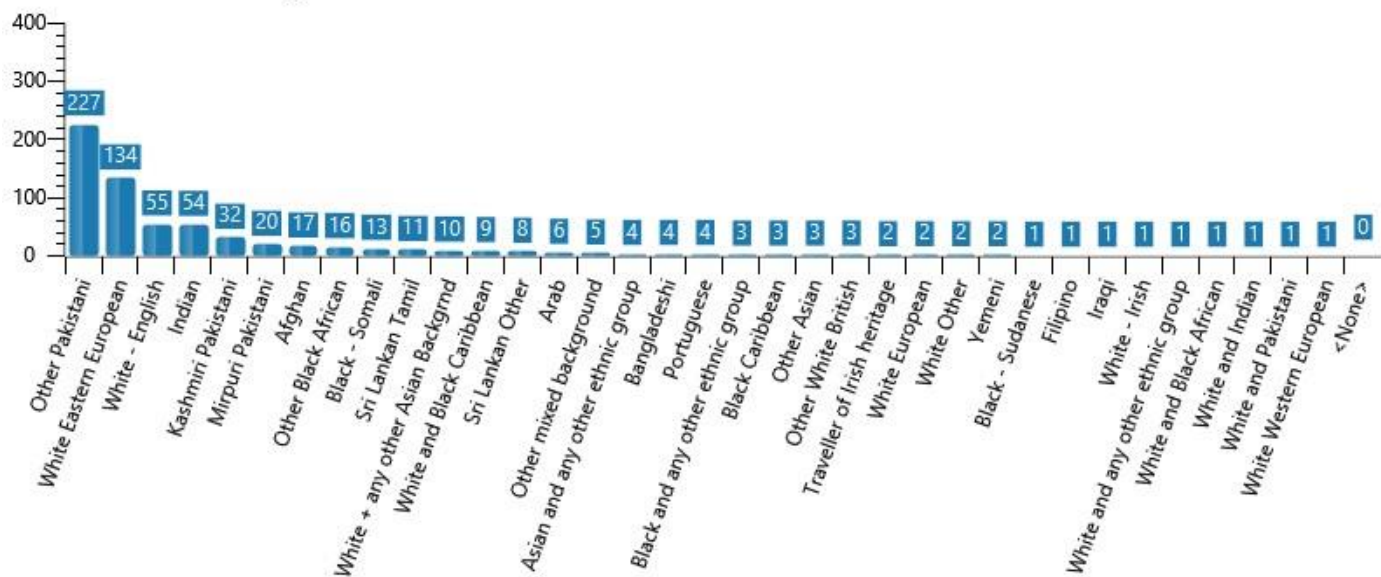
A count of students in each year group, with drill through to registration group



Ethnicity and Race

Student Totals by Ethnicity

A count of students with each ethnicity



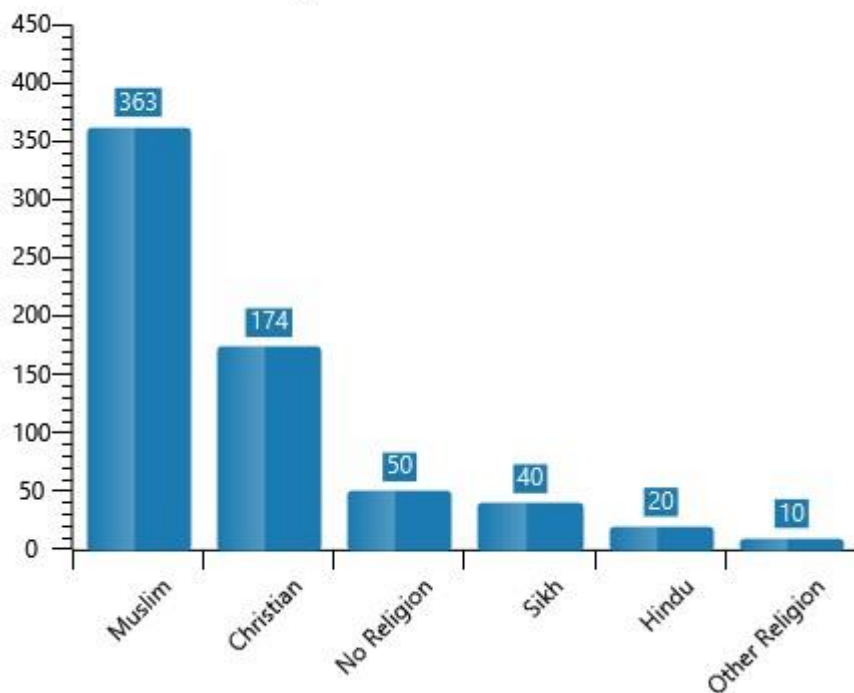
	No. of pupils	% of pupils
Other Pakistani	227	34.4
White Eastern European	134	20.4
White – English	55	8.4
Indian	54	8.2
Kashmiri Pakistani	32	4.9
Mirpuri Pakistani	20	3
Afghan	17	2.6
Other Black African	16	2.4
Black – Somali	13	2
Sri Lankan Tamil	11	1.7
White + any other Asian background	10	1.5
White and Black Caribbean	9	1.4
Sri Lankan Other	8	1.2
Arab	6	0.9
Other mixed background	5	0.8

Asian and any other ethnic group	4	0.6
Bangladeshi	4	0.6
Portuguese	4	0.6
Black and any other ethnic group	3	0.5
Black Carribean	3	0.5
Other Asian	3	0.5
Other White British	3	0.5
Traveller of Irish heritage	2	0.3
White European	2	0.3
White other	2	0.3
Yemeni	2	0.3
Black – Sudanese	1	0.2
Filipino	1	0.2
Iraqi	1	0.2
White – Irish	1	0.2
White and any other ethnic group	1	0.2
White and black African	1	0.2
White and Indian	1	0.2
White and Pakistani	1	0.2
White Western European	1	0.2

Religion and Belief

Student Totals by Religion

A count of students with each religion



	No. of pupils	% of school population
Muslim	363	55.2%
Christian	174	26.5%
No religion	50	7.6%
Sikh	40	6.1%
Hindu	20	3%
Other	10	1.5%

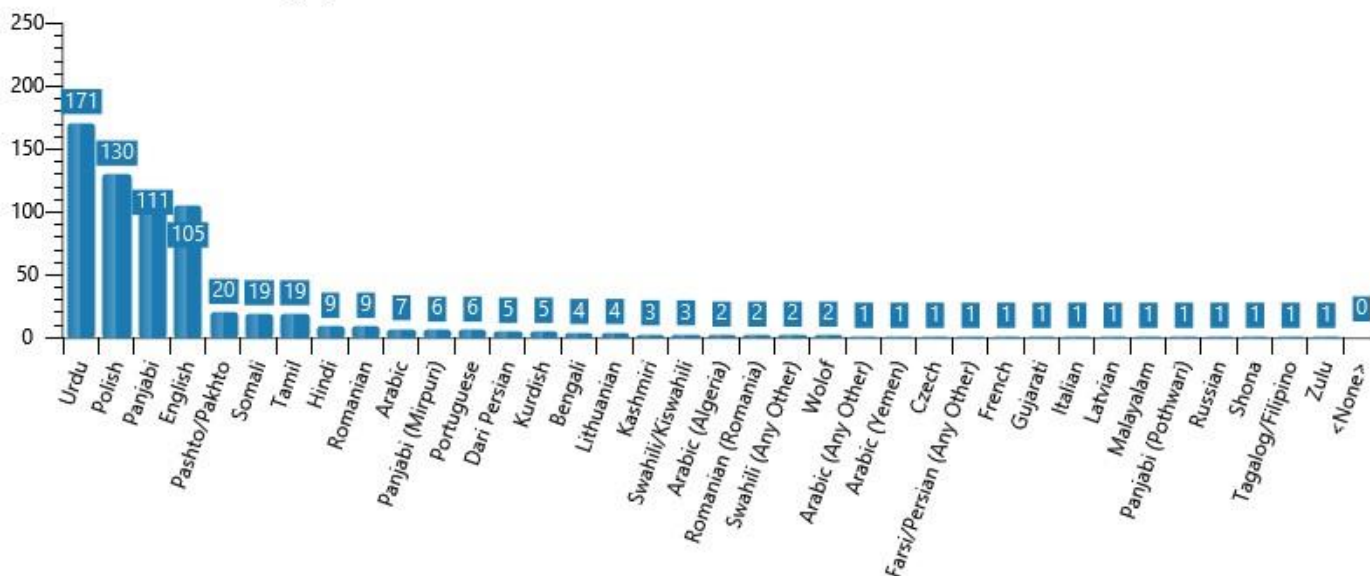
English as an Additional Language (EAL)

	No. of pupils	% of school population
Number of pupils who speak English as an additional language	559	85%
Number of pupil who speak English as their first language	97	15%

First language

Student Totals by First Language

A count of students with each first language



Pupils from low income backgrounds

	No. of pupils	% of school population
Number of pupils eligible for Free School Meals (FSM)	79	12%
Number of pupils entitled to Pupil Premium funding	155	24%

Look after Children

	No. of pupils	% of school population
Number of pupils in care	5	0.8%

Key Pastoral

Student Totals by Key Pastoral Factors

A count of students with each key pastoral factor

